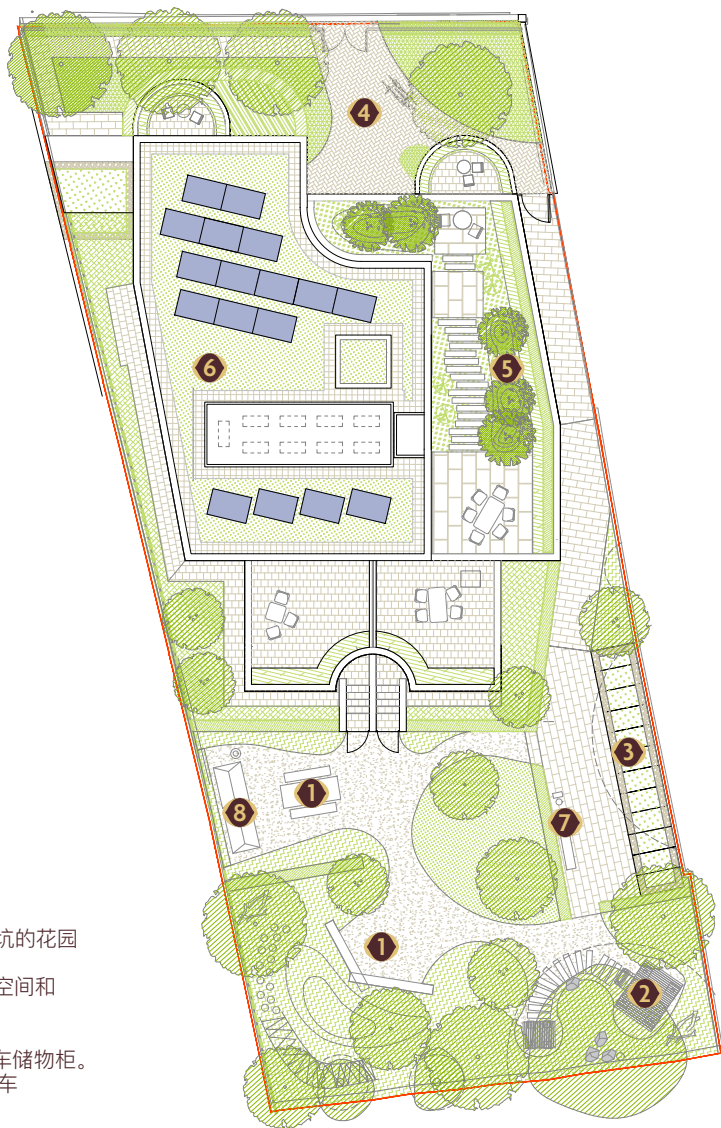


CEDAROE  MANSION

户型平面图/场地平面图

www.cedaroe.com

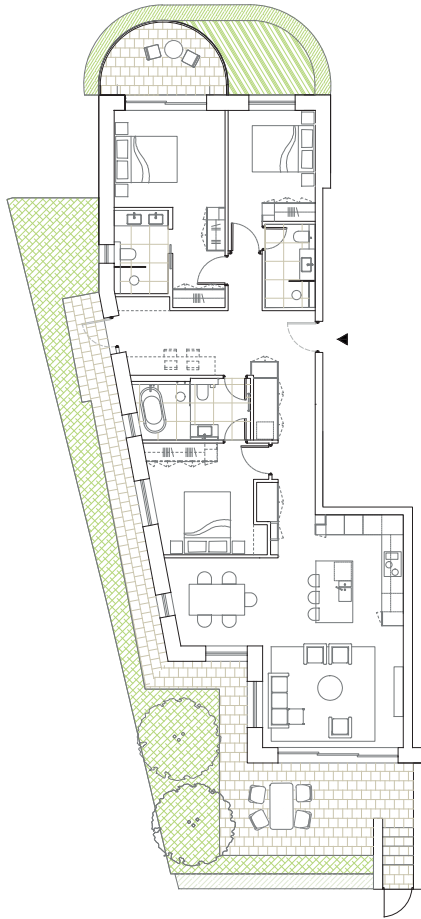


现场设施

- ① 野餐区与带篝火坑的花园
- ② 可供幼儿玩耍的空间和专用游乐设备
- ③ 每户专用的自行车储物柜。可停放 2 辆自行车
- ④ 访客自行车车位
- ⑤ 载货自行车车位
- ⑥ 生态多样性绿化屋顶
- ⑦ 自行车维修站
- ⑧ 迷你蔬菜农场



请注意，实际测量值和尺寸可能相差最多 10%

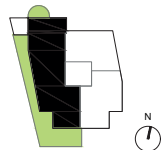


APARTMENT 1 GROUND FLOOR
(3 Bedroom PLUS)

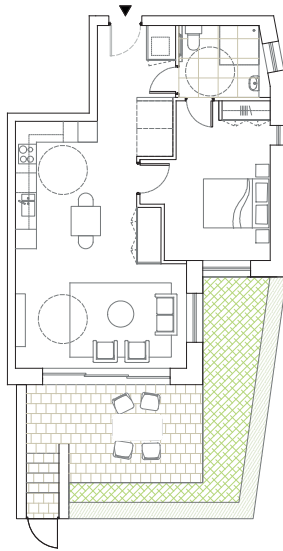
128.0 SQ M

1378 SQ FT

Kitchen	4.0 m x 3.5 m	13.1 ft x 11.5 ft
Living	4.5 m x 4.0 m	14.8 ft x 13.1 ft
Dining	3.4 m x 2.8 m	11.2 ft x 9.2 ft
Main Bedroom	3.6 m x 3.1 m	11.8 ft x 10.2 ft
Bedroom 2	3.6 m x 2.8 m	11.8 ft x 9.2 ft
Bedroom 3	3.6 m x 3.3 m	11.8 ft x 10.8 ft
Bathroom 1	3.6 m x 2 m	11.8 ft x 6.6 ft
Bathroom 2	2.7 m x 1.7 m	8.9 ft x 5.6 ft
Bathroom 3	2.7 m x 1.6 m	8.9 ft x 5.2 ft
PLUS space	4.9 m x 2.5 m	16.1 ft x 8.2 ft
Patio	8.2 sq m	88.3 sq ft
Private Garden	72.6 sq m	781.5 sq ft



请注意，实际测量值和尺寸可能相差最多 10%

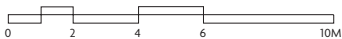


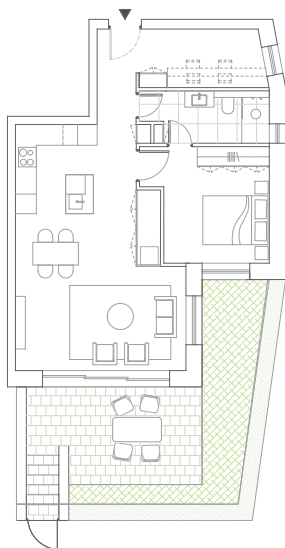
APARTMENT 2 GROUND FLOOR
(1 Bedroom Accessible)

65.6 SQ M

706 SQ FT

Kitchen	3.9 m x 3.7 m	12.8 ft x 12.1 ft
Living / Dining	5.2 m x 3.6 m	17.06 ft x 11.8 ft
Main Bedroom	3.2 m x 4.8 m	9.84 ft x 15.75 ft
Bathroom 1	2.2 m x 2.6 m	7.22 ft x 8.53 ft
Private Garden	30.2 sq m	325.1 sq ft



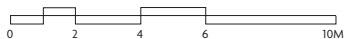


APARTMENT 2 GROUND FLOOR
(1 Bedroom PLUS Alternate)

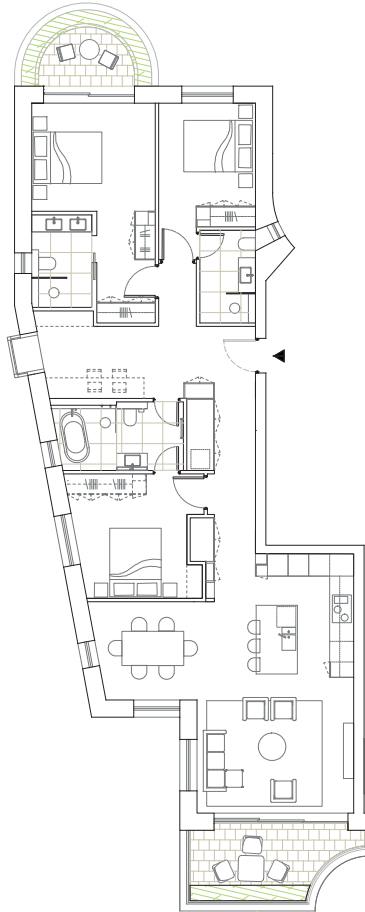
65.6 SQ M

706 SQ FT

Kitchen	3.7 m x 2.7 m	12.1 ft x 8.9 ft
Living / Dining	4.8 m x 5.2 m	15.7 ft x 17.1 ft
Main Bedroom	3.5 m x 3.2 m	11.5 ft x 10.5 ft
Bathroom 1	3.2 m x 1.6 m	10.5 ft x 5.2 ft
PLUS Space	3.9 m x 1.8 m	12.8 ft x 5.9 ft
Private Garden	30.2 sq m	325.1 sq ft

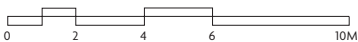
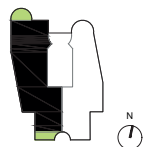


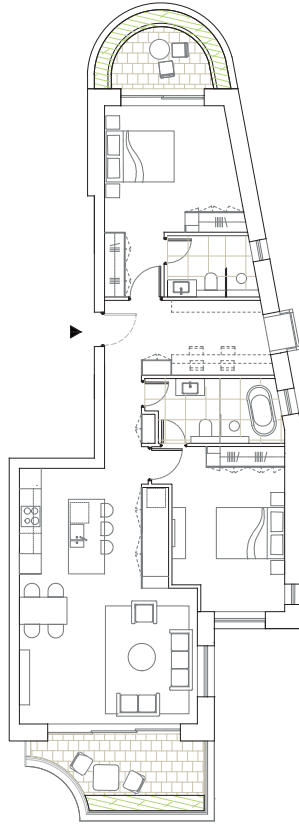
请注意，实际测量值和尺寸可能相差最多 10%



APARTMENT 3 FIRST FLOOR
APARTMENT 5 SECOND FLOOR
(3 Bedroom PLUS)

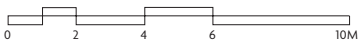
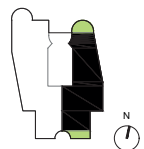
	128.0 SQ M	1378 SQ FT
Kitchen	4.0 m x 3.5 m	13.1 ft x 11.5 ft
Living	4.5 m x 4.0 m	14.8 ft x 13.1 ft
Dining	3.4 m x 2.8 m	11.2 ft x 9.2 ft
Main Bedroom	3.6 m x 3.1 m	11.8 ft x 10.2 ft
Bedroom 2	3.6 m x 2.8 m	11.8 ft x 9.2 ft
Bedroom 3	3.6 m x 3.3 m	11.8 ft x 10.8 ft
Bathroom 1	3.6 m x 2.0 m	11.8 ft x 6.6 ft
Bathroom 2	2.7 m x 1.7 m	8.9 ft x 5.6 ft
Bathroom 3	2.7 m x 1.6 m	8.9 ft x 5.2 ft
PLUS space	4.9 m x 2.5 m	16.1 ft x 8.2 ft
Balcony 1	6.9 sq m	74.3 sq ft
Balcony 2	9.2 sq m	99.0 sq ft



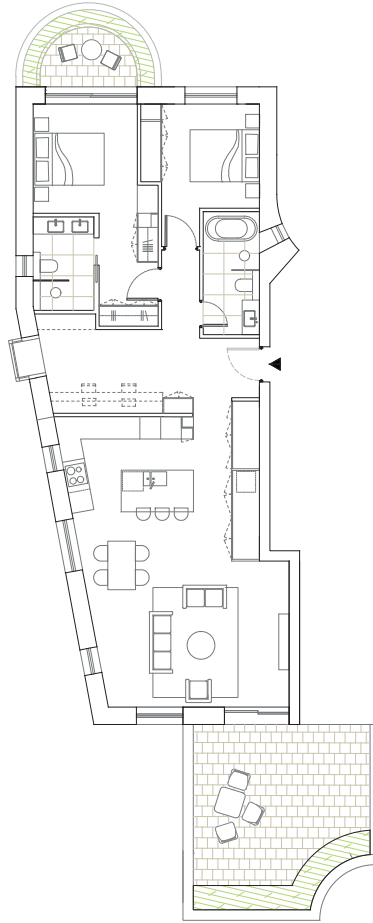


APARTMENT 4 FIRST FLOOR
APARTMENT 6 SECOND FLOOR
(2 Bedroom PLUS)

	98.0 SQ M	1055 SQ FT
Kitchen	3.5 m x 3.1 m	11.5 ft x 10.2 ft
Living / Dining	5.2 m x 4.4 m	17.1 ft x 14.4 ft
Main Bedroom	3.9 m x 3.7 m	12.8 ft x 12.1 ft
Bedroom 2	4.8 m x 3.3 m	15.7 ft x 10.8 ft
Bathroom 1	3.6 m x 1.9m	11.8 ft x 6.2 ft
Bathroom 2	2.5 m x 1.8 m	8.2 ft x 5.9 ft
PLUS space	3.7 m x 2.2 m	12.1 ft x 7.2 ft
Balcony 1	7.4 sq m	79.7 sq ft
Balcony 2	9.2 sq m	99.0 sq ft



请注意，实际测量值和尺寸可能相差最多 10%

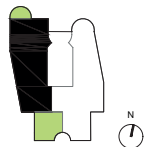


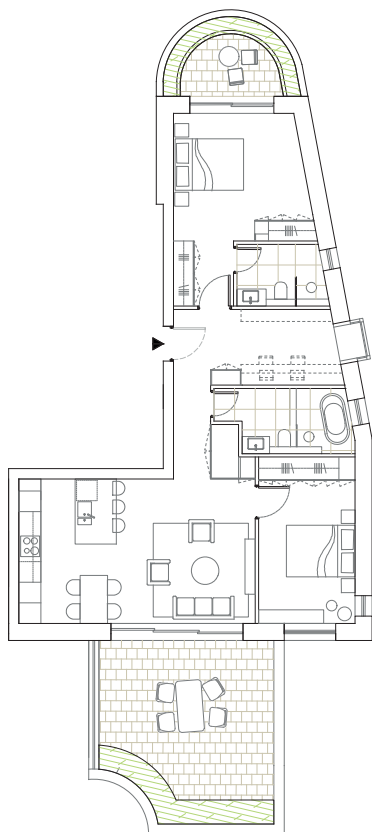
**APARTMENT 7 THIRD FLOOR
(2 Bedroom PLUS)**

104.6 SQ M

1126 SQ FT

Kitchen	5.6 m x 3.0 m	18.4 ft x 9.8 ft
Living / Dining	5.3 m x 5.6 m	17.4 ft x 18.4 ft
Main Bedroom	3.6 m x 3.1 m	11.8 ft x 10.2 ft
Bedroom 2	3.0 m x 3.4 m	9.8 ft x 11.2 ft
Bathroom 1	2.7 m x 1.7 m	8.9 ft x 5.6 ft
Bathroom 2	3.5 m x 1.6 m	11.5 ft x 5.2 ft
PLUS space	4.2 m x 2.8 m	13.8 ft x 9.2 ft
Balcony 1	6.9 sq m	74.3 sq ft
Terrace	25.2 sq m	271.3 sq ft



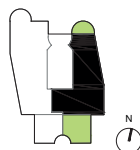


**APARTMENT 8 THIRD FLOOR
(2 Bedroom PLUS)**

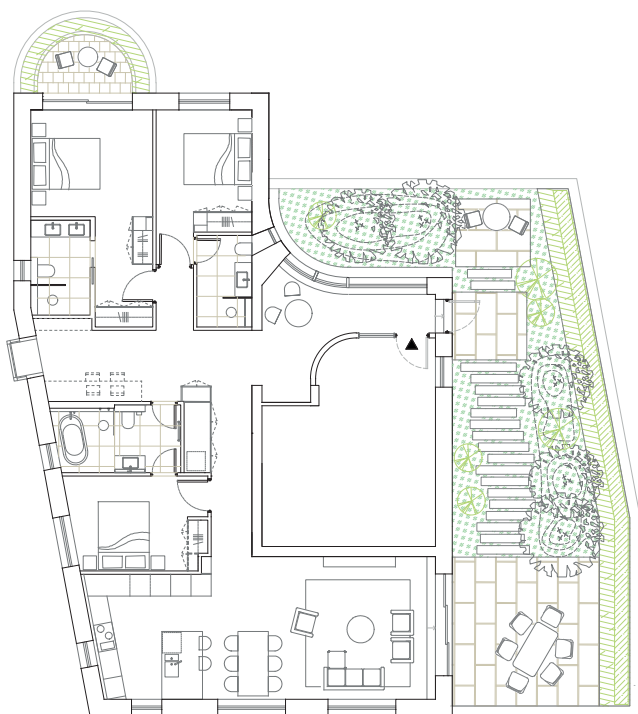
89.3 SQ M

961 SQ FT

Kitchen	4.2 m x 3.1 m	13.8 ft x 10.2 ft
Living / Dining	5.1 m x 4.2 m	16.7 ft x 13.8 ft
Main Bedroom	3.8 m x 3.7 m	12.5 ft x 12.1 ft
Bedroom 2	4.8 m x 2.8 m	15.7 ft x 9.2 ft
Bathroom 1	3.1 m x 1.9 m	10.2 ft x 6.2 ft
Bathroom 2	2.5 m x 1.8 m	8.2 ft x 5.9 ft
PLUS space	3.7 m x 2.2 m	12.1 ft x 7.2 ft
Balcony	7.4 sq m	79.7 sq ft
Terrace	25.2 sq m	271.3 sq ft



请注意，实际测量值和尺寸可能相差最多 10%



**PENTHOUSE
APARTMENT 9 TOP FLOOR**
(3 Bedroom PLUS)

139.0 SQ M

1497 SQ FT

Kitchen	3.6 m x 3.5 m	11.8 ft x 11.5 ft
Living	4.3 m x 4.2 m	14.1 ft x 13.8 ft
Dining	4.2 m x 2.3 m	13.8 ft x 7.5 ft
Main Bedroom	3.6 m x 3.1 m	11.8 ft x 10.2 ft
Bedroom 2	3.6 m x 2.8 m	11.8 ft x 9.2 ft
Bedroom 3	4.0 m x 2.8 m	13.1 ft x 9.2 ft
Bathroom 1	3.6 m x 2.0 m	11.8 ft x 6.6 ft
Bathroom 2	2.8 m x 1.7 m	9.2 ft x 5.6 ft
Bathroom 3	2.7 m x 1.6 m	8.9 ft x 5.2 ft
PLUS space	5.0 m x 2.6 m	16.4 ft x 8.5 ft
Balcony	6.9 sq m	74.3 sq ft
Terrace	84.1 sq m	905.3 sq ft



请注意, 实际测量值和尺寸可能相差最多 10%